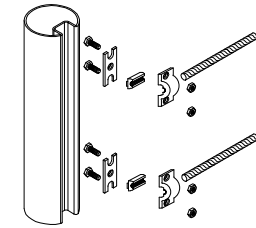
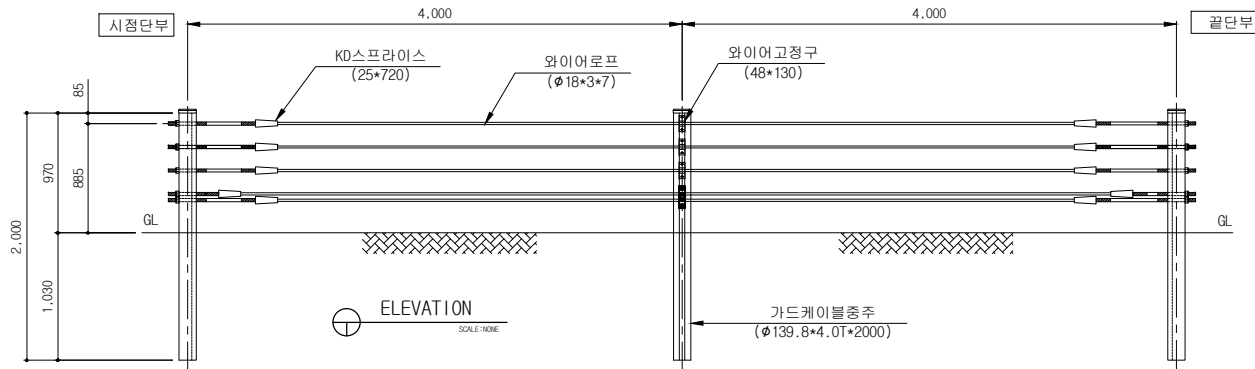
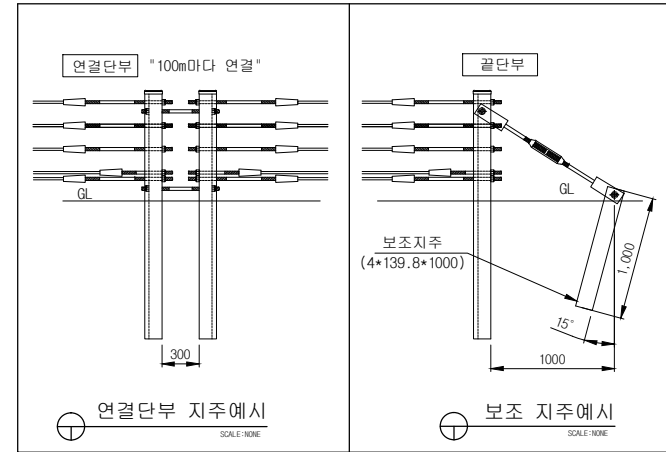
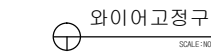
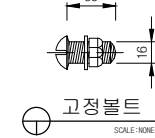
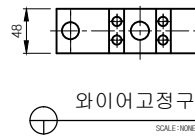
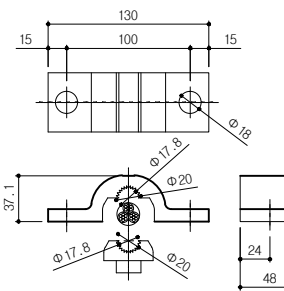
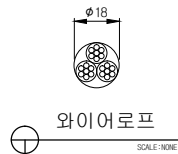
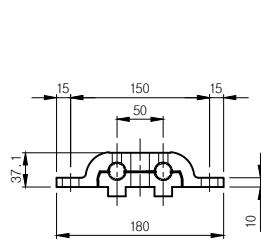
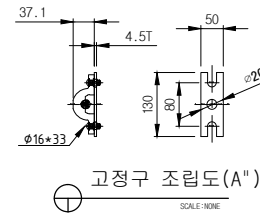
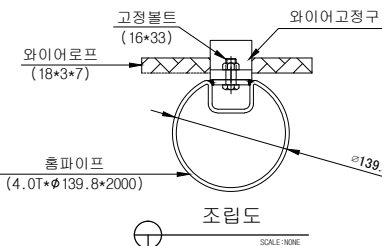
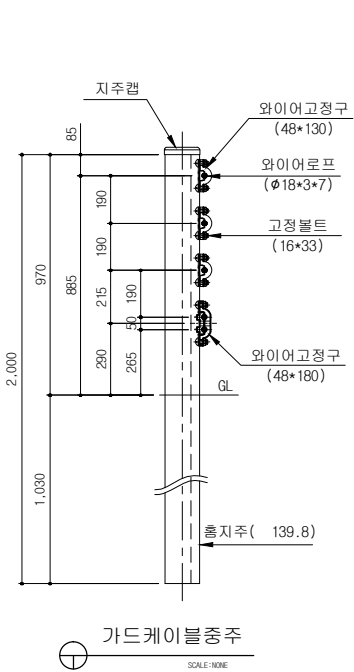


5단 KD케이블(KDGC-05)-4M



와이어고정구 사시도
SCALE: NONE



표준구간(경간당)

품명	규격	단위	수량	비고
주주	4.0T*139.8*2000	본	1	용용도금
주주캡	φ139.8용	조	1	용용도금
와이어로프	φ18*3*7	M	20	용용도금
와이어고정구	48*130	조	3	AL6061 T6
와이어고정구	48*180	조	1	AL6061 T6
고정B/N	φ16*33	조	8	용용도금

제품명 Drawing	5단 KD케이블	설계 Design	날짜	2017.11.20	도면번호	(주)금동강건 KUDONG	경남 밀양시 초동면 명성리 2467번지 초동농공단지 내 TEL:(055)-391-1717, FAX:(055)-391-4600 도로안전시설물 전문 생산업체
모델명 Model	KDGC-05-4	제도 Drawing	축척	NON	KDGC-05-4		