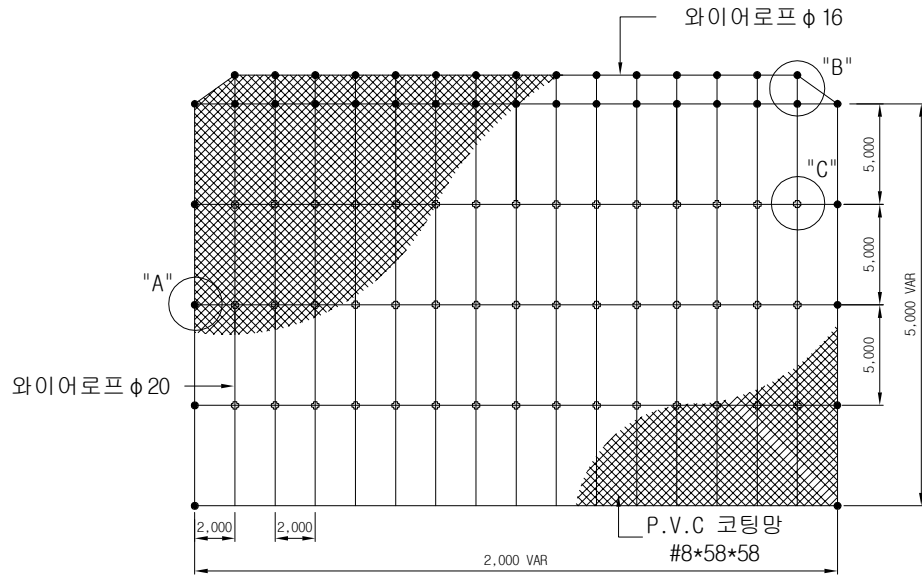
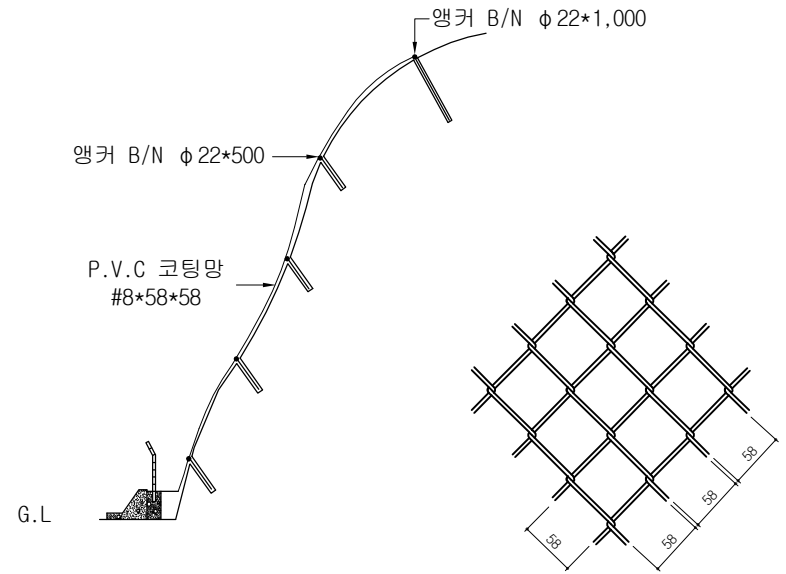


커튼형 낙석방지망(KD-NM-02)

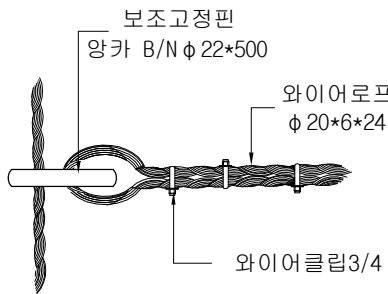


ELEVATION
SCALE : NONE

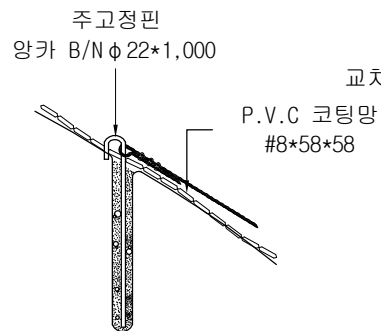


SIDE ELEVATION
SCALE : NONE

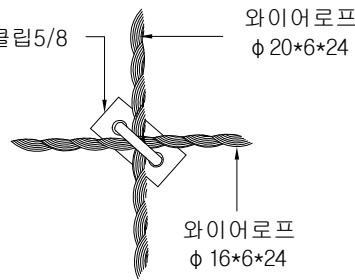
코팅망 상세
SCALE : NONE



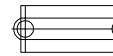
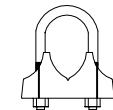
" A " 상세도
SCALE : NONE



" B " 상세도
SCALE : NONE



" C " 상세도
SCALE : NONE




와이어 클립
SCALE : NONE

재료표

규격 : 1㎡

품 목	규 격	단 위	수 량	비 고
PVC 코팅망	#8*58*58	M2	1.15	PVC코팅
와이어로프	φ20*6*24	M	0.52	아연도금
와이어로프	φ16*6*24	M	0.25	아연도금
교차클립	5/8	EA	0.1	용융도금
주고정핀 (양카 B/N)	φ22*1,000	EA	0.017	용융도금
보조고정핀 (양카 B/N)	φ22*500	EA	0.017	용융도금
와이어클립	3/4, 5/8	EA	0.3	용융도금
결속선	#12	M	0.2	PVC 코팅

도면명 Drawing	낙석방지망(커튼형)	설계 Design	날짜	2015.03	도면번호	(주)금동강건  경남 밀양시 초동면 명성리 2467번지 초동농공단지 내 TEL:055-391-1717, FAX:055-391-4600 도로안전시설물 전문 생산업체
공사명 Project		제도 Drawing	축척	NONE	KD-NM-02	